

F22.1

NEW GENERATION RC CAR

1/10 SCALE ELECTRIC
FORMULA CAR



INSTRUCTION MANUAL

WIRC
PROFESSIONAL RC CAR

WWW.WIRCACING.COM



INTRODUCTION

F22 is a new generation high quality 1/10 scale formula car.
F22 is supplied in a box equipped with Instruction Manual.
Its use is intended for more than 16 years old persons with experience on rc model car field.
Children and all the persons without this requirement **MUST** have direct supervision of a knowledgeable adult responsible.

SAFETY PRECAUTIONS

Instruction Manual **MUST** be read and fully understood before to start building and operating functions.
Always keep Instruction Manual in safety place, ready to be consulted for any reference you need.
Use only original WIRC spare parts.

GENERAL INFORMATION

Assemble the kit only away from the reach of children.
Follow the building and operating instructions using the utmost care.
Don't put any part of your body inside rotating and moving elements as this may cause damage or serious injury.
Check and clean the model before putting it away.
Don't use your model car in public places or in roads and areas where it could generate conflict with person or vehicular traffic.
The model car is controlled by radio: you **MUST** put great care to avoid loss of radio control always keeping a safety margin all around your model in order to prevent any collision.
Operating frequency: check and be sure it is clear and not shared with anybody at same time; it could cause loss of control of the RC model.
Always turn on your transmitter before you turn on the receiver in the car and always turn off the receiver before you turn off your transmitter.
Keep the wheels of the model off the ground when checking the operation of the radio equipment.
Disconnect the battery pack before storing your model.

WARRANTY

WIRC guarantees this model kit to be free from defects in both material and workmanship within 30 days of purchase.
The total monetary value under warranty will in no case exceed the cost of the original kit purchased.
This warranty doesn't cover any components damaged by use or modification or as result of wear.
Part or parts missing from this kit must be reported within 30 days of purchase.
No part or parts will be sent under warranty without proof of purchase.
If you find a defective or missing part, contact the local distributor.
Customer service and support will be provided through local hobby store.
No warranties are expressed or implied that cover damage caused by what is considered normal use or cover or imply how long any model cars' components or electric components will last before requiring replacement.
Due to the high performance level of this model car you will need to periodically maintain and replace consumable components; any and all warranty coverage will not cover replacement of any part or component damaged by neglect, abuse or improper or unreasonable use.
This includes but is not limited to damage from crashing, excessive moisture, improper use or no maintenance or user modifications which compromise the integrity of components.
Warranty will not cover components that are considered consumable on RC model car.
WIRC doesn't pay nor refund on any component sent from WIRC or its distributor for warranty.
WIRC reserves the right to make final determination of the warranty status of any component or part
Use only original WIRC spare part:

CUSTOMER SUPPORT

Please don't hesitate to contact WIRC support at info@wircracing.com for any problem or question.
Also kindly visit our website www.wircracing.com to find last updates, set-up information, option parts and other information.

World racing car s.r.l.
Via A.Volta 2BIS
36040 Brendola (VI)
ITALY

Phone: 0039 0444 1792263

E-mail: info@wircracing.com
Website: www.wircracing.com



TECHNICAL INFORMATION

- TRANSMISSION: 2 DRIVE WHEELS
- BODY: LEXAN FORMULA MODEL (NOT INCLUDED)
- ADJUSTABLE FRONT TOE, CAMBER AND CASTER
- ADJUSTABLE REAR HEIGHT
- BUMPER /FRONT BACKSTOP
- CARBON CHASSIS 2mm
- FULL BALL BEARING
- ADJUSTABLE DIFFERENTIAL

TECHNICAL DATA

- LENGTH418 MM.
- WIDTH190 MM.
- ADJUSTABLE WHEEL BASE269-265MM.
- WEIGHT CHASSIS.....1080 GR.

ADDITIONAL ITEMS NEEDED FOR COMPLETION (REQUIRED BUT NOT INCLUDED IN THE KIT)



ELECTRIC MOTOR
PINION GEAR



TRANSMITTER



RECEIVER



LOW PROFILE STEERING SERVO



BATTERIES
FOR TRANSMITTER



WHEEL - TYRES - INSERTS
INCLUDED



LIPO BATTERY



SPEED CONTROLLER



LEXAN BODY +
DECALS
INCLUDED

TOOLS REQUIRED

THESE TOOLS ARE NOT INCLUDED IN THE KIT BUT ARE REQUIRED FOR PROPER ASSEMBLY



ALLENS:
1.5 mm
2 mm
3 mm



SOCKET
5mm
7mm



SIDE CUTTERS



COMBINATION PLIERS



SCISSORS



TOOL FOR
TURNBUCKLES/NUTS



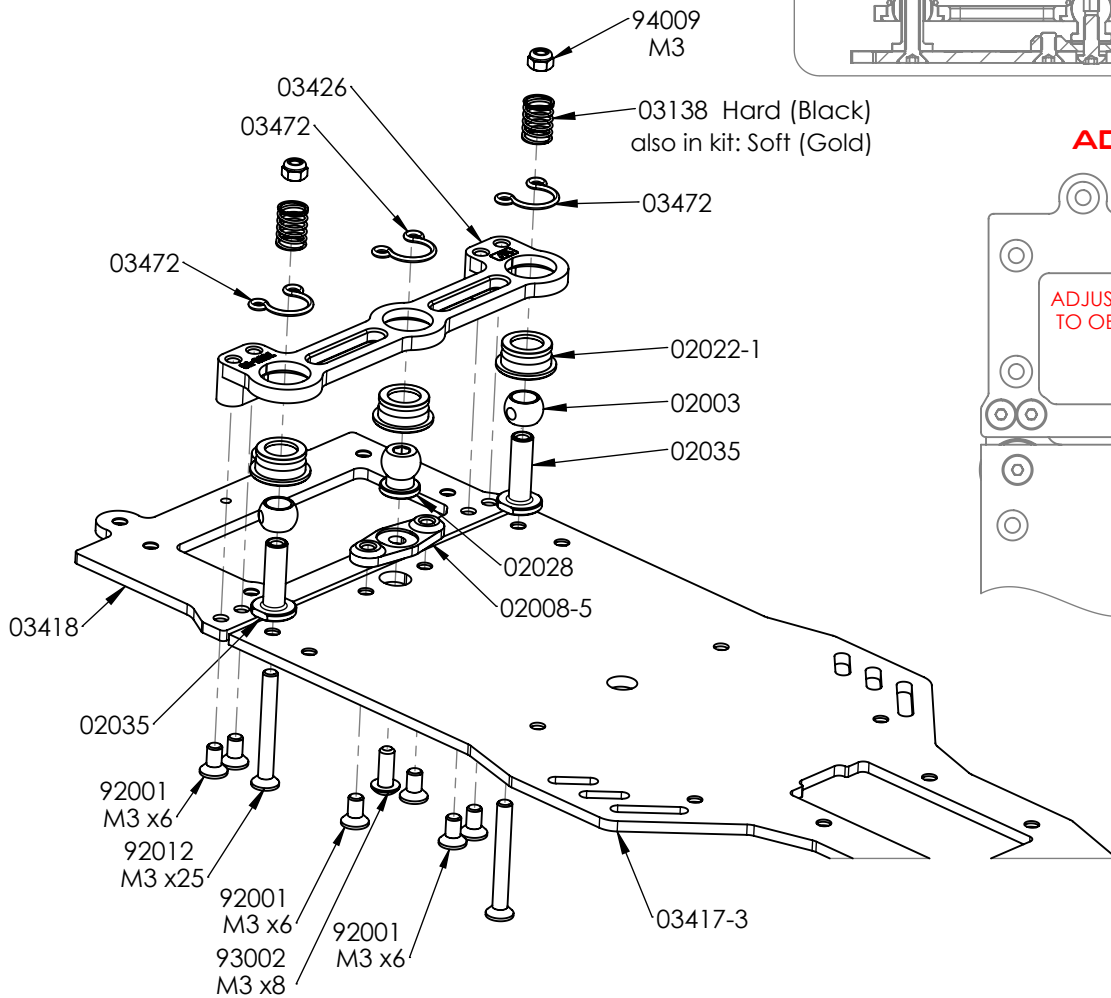
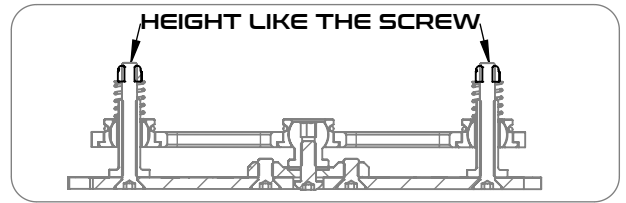
GREASE



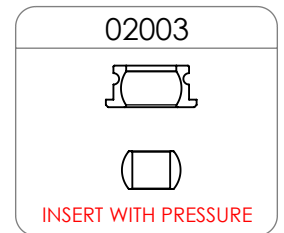
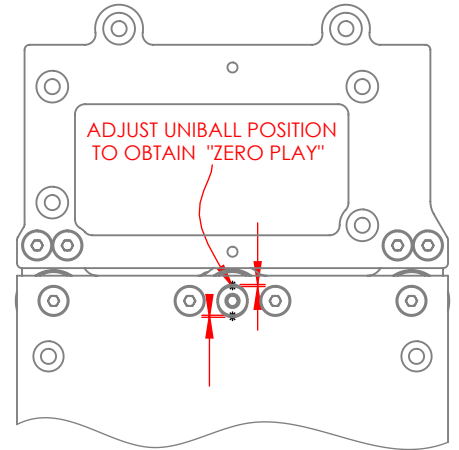
OILS:
BEARING OIL
SILICONE OIL

NOTICE:

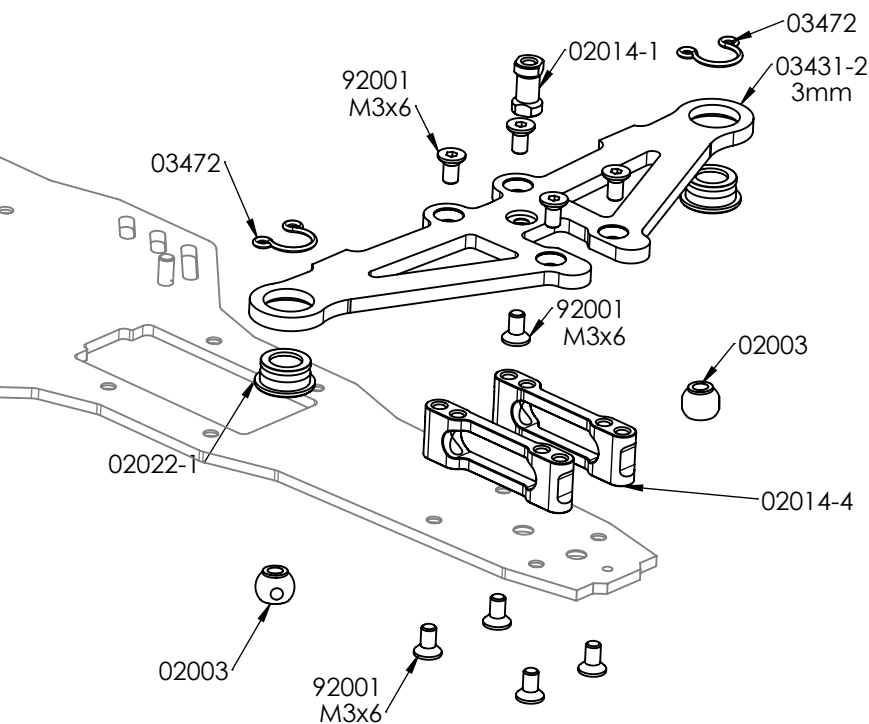
THE FOLLOWING ITEMS ARE NEEDED FOR COMPLETION OF THE LM16; THEY ARE NOT INCLUDED IN THIS KIT (UNLESS NOTED) AND SHOULD BE OBTAINED FROM YOUR LOCAL HOBBY SHOP. BE SURE TO READ THE INSTRUCTION COMPLETELY PRIOR TO ASSEMBLY



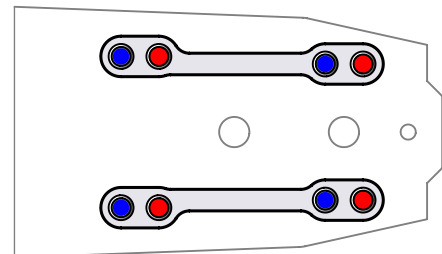
ADJUST PLAY



BAG 2



This part is not simmetric, make sure it's horiented properly.



Fit the carbon arm on the **Rear Holes (Blue)**.

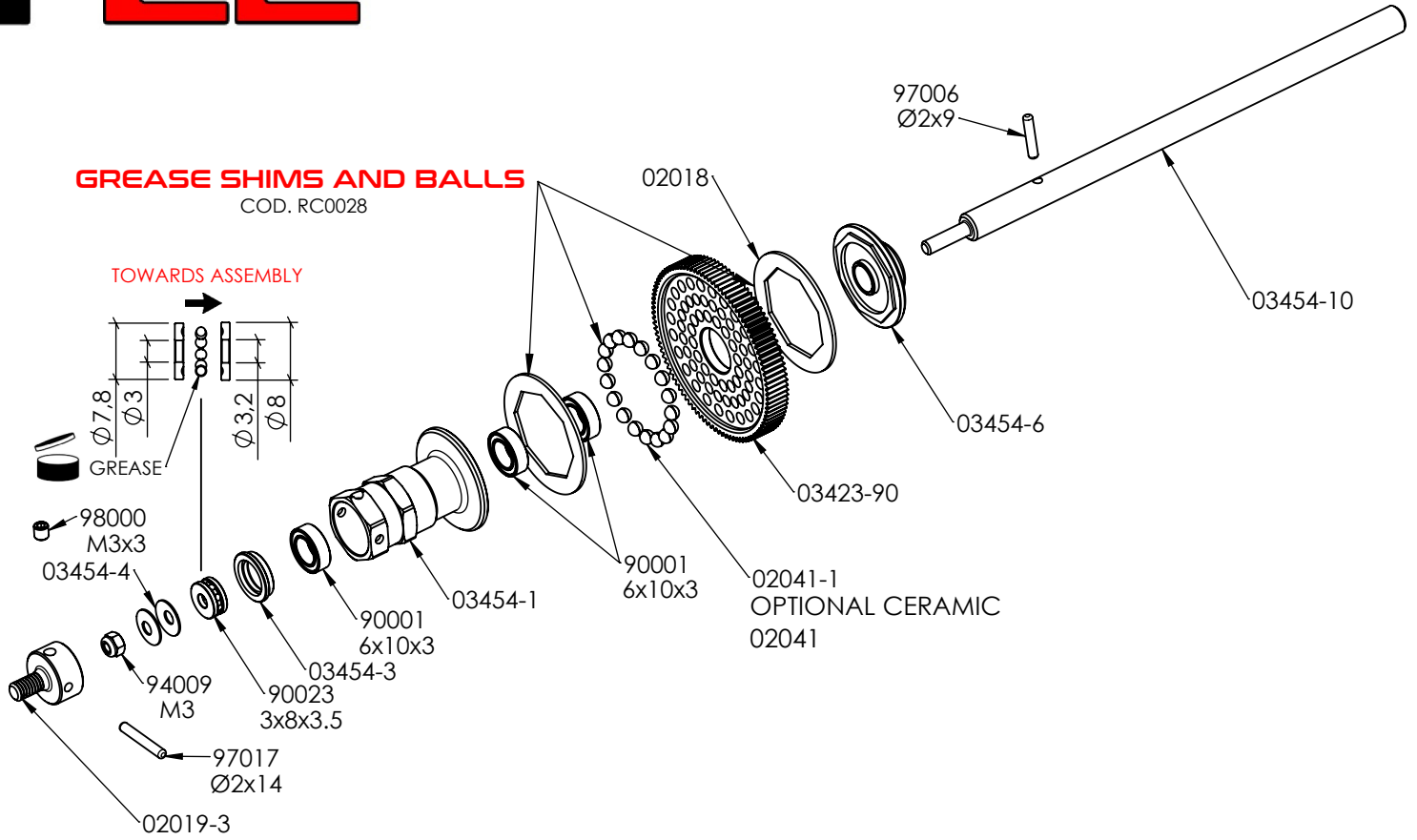
Use the lower holes to move the support longitudinally and change wheelbase setting:

RED - Short wheelbase, better turning but less stable

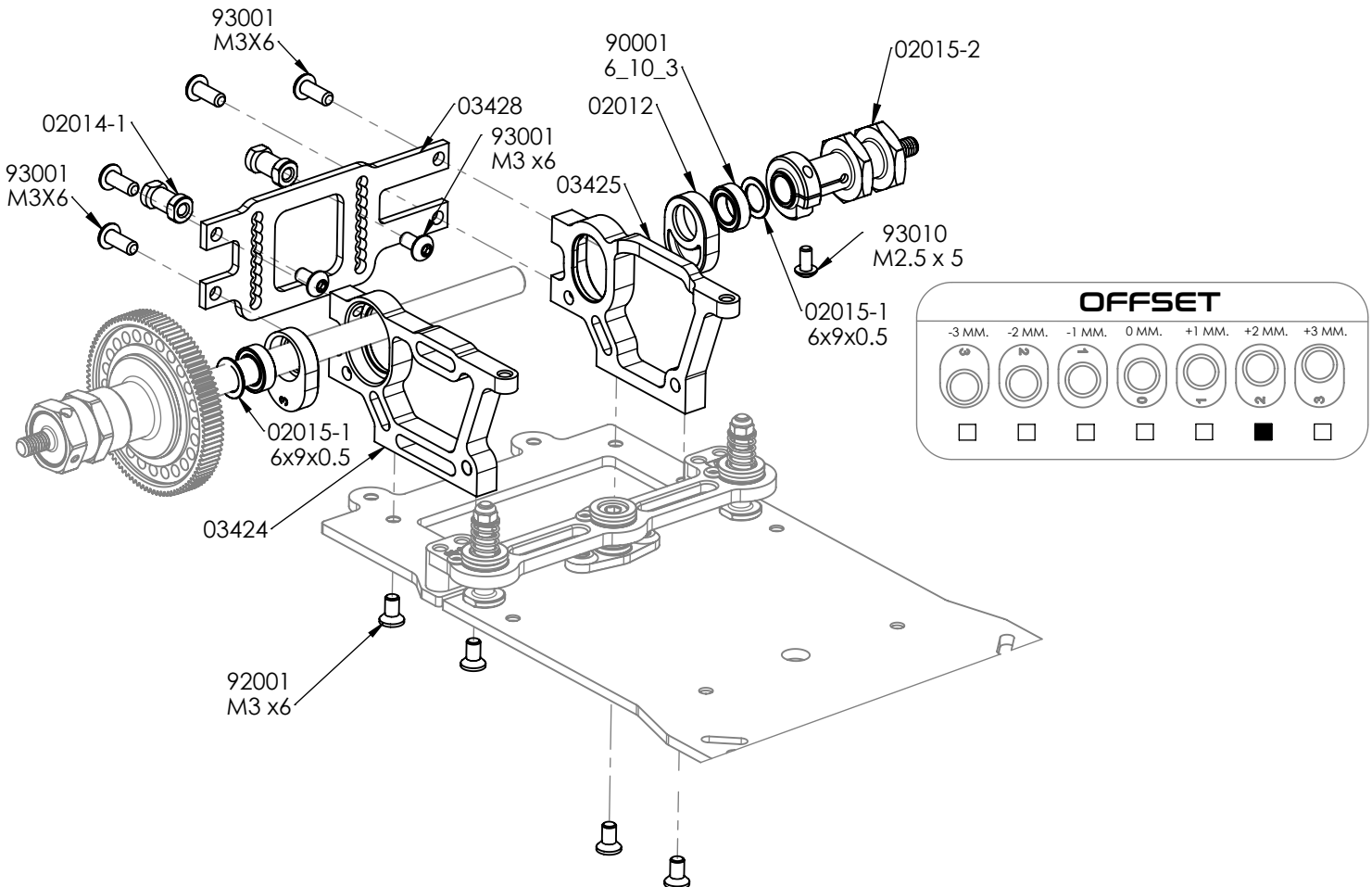
BLUE - Long wheelbase, more stable but less sharp in corners.

GREASE SHIMS AND BALLS

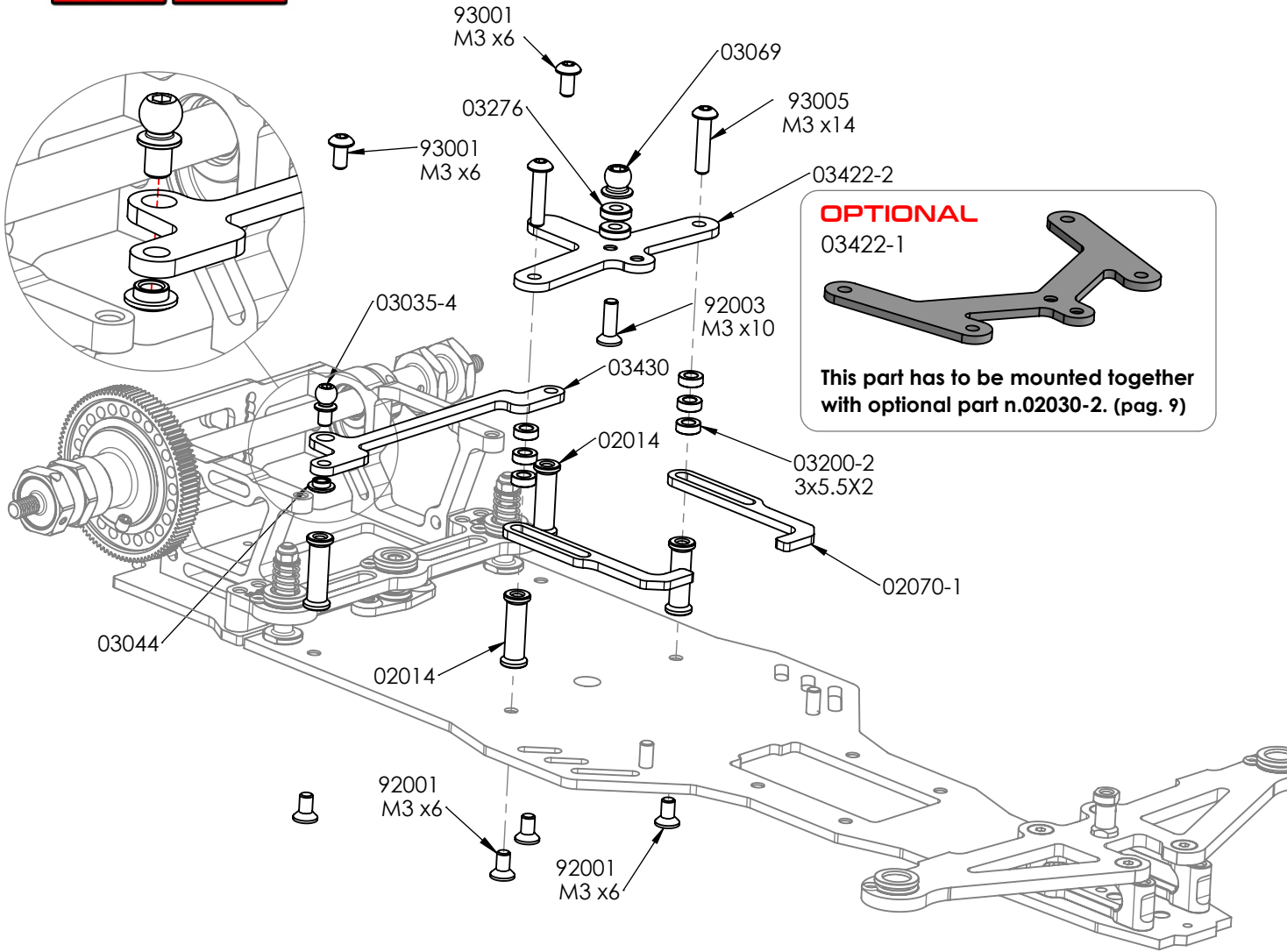
COD. RC0028



BAG 4



BAG 5



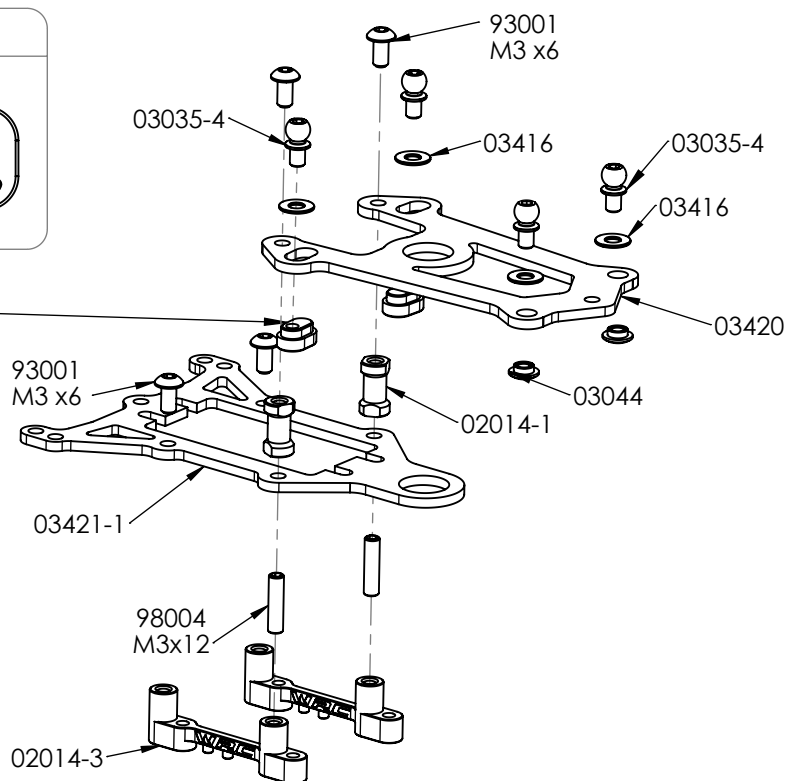
BAG 6

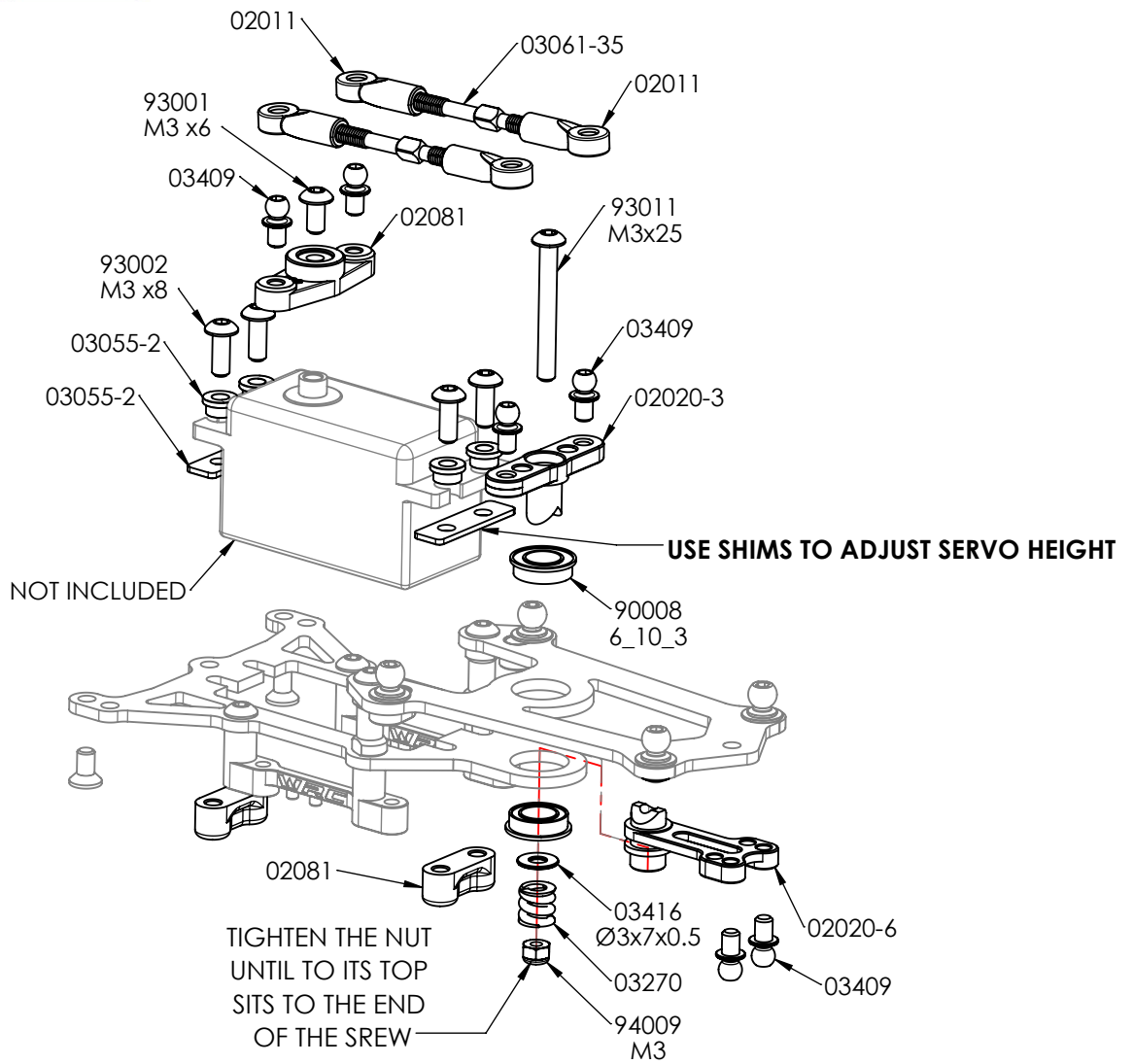
CASTER

9° (standard)	In Kit

03262

OPTIONAL
03262-1 ALU 7075 T6



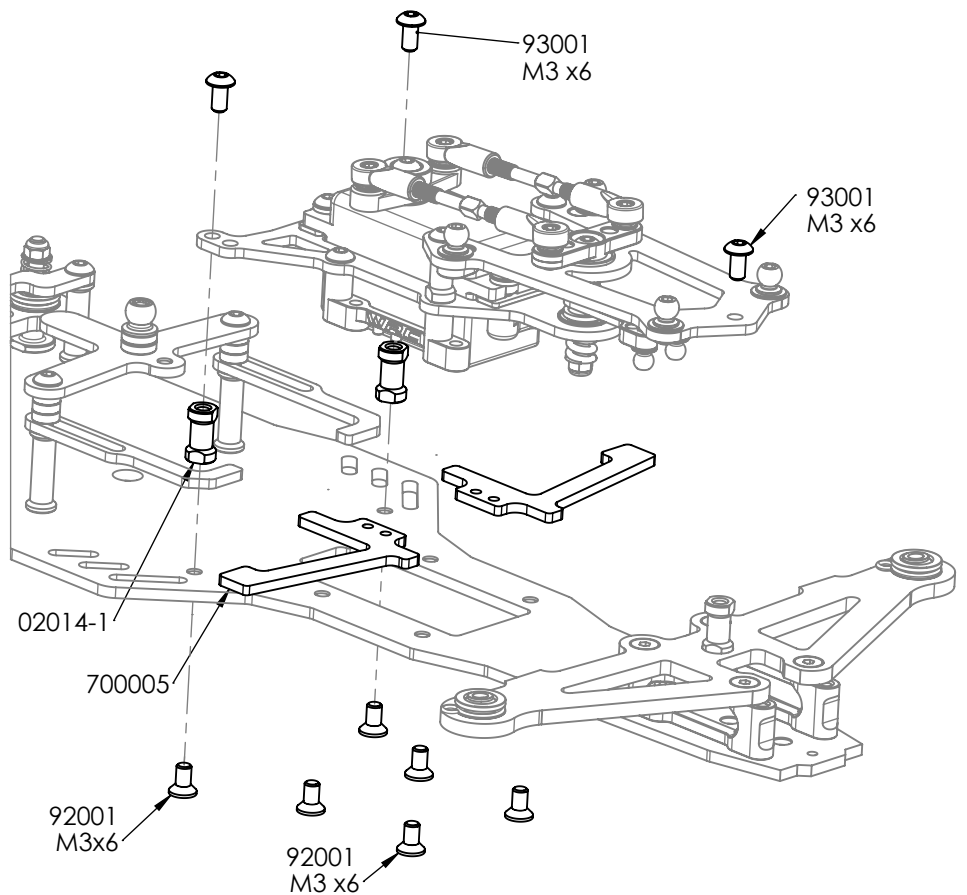


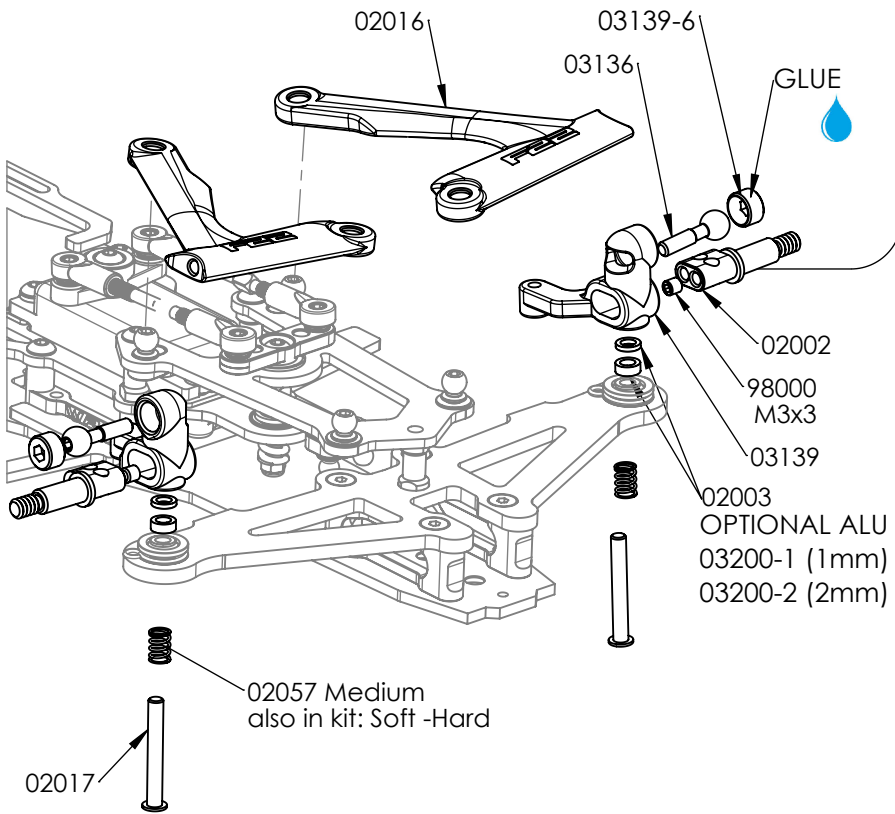
Adjust position based front arm position (pag. 3).

RED - Short wheelbase

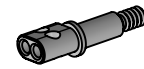
BLUE - Long wheelbase

Adjust position based on length of car/wheelbase setting.

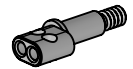




WHEELBASE POSITION

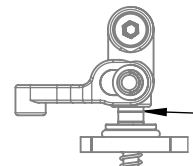


LONG

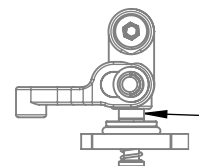


SHORT

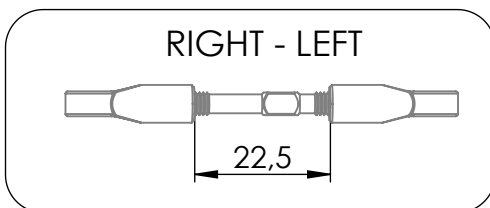
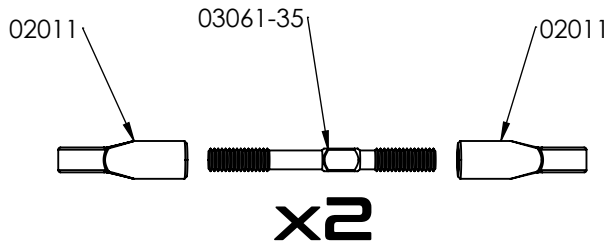
RISE HEIGHT ADJUSTMENT



TO LOWER CAR



TO LIFT UP THE CAR



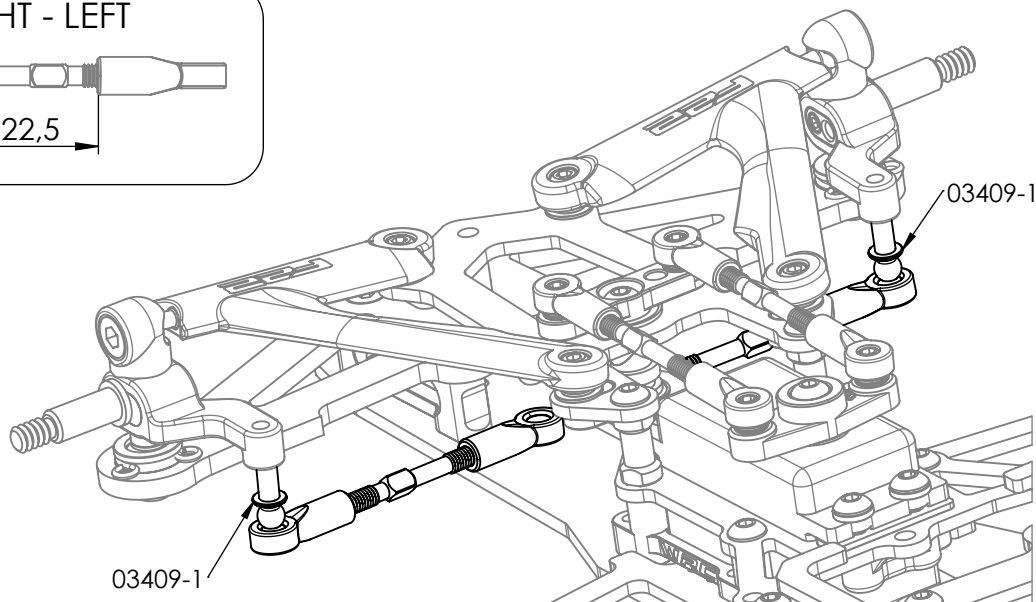
22,5

x2

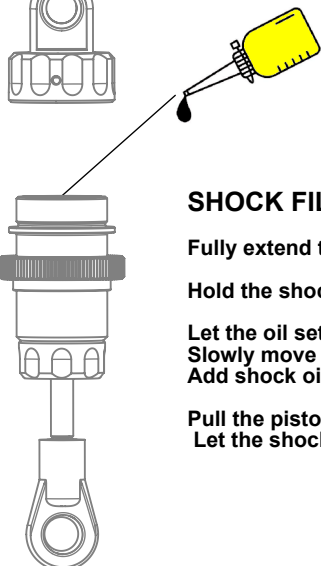
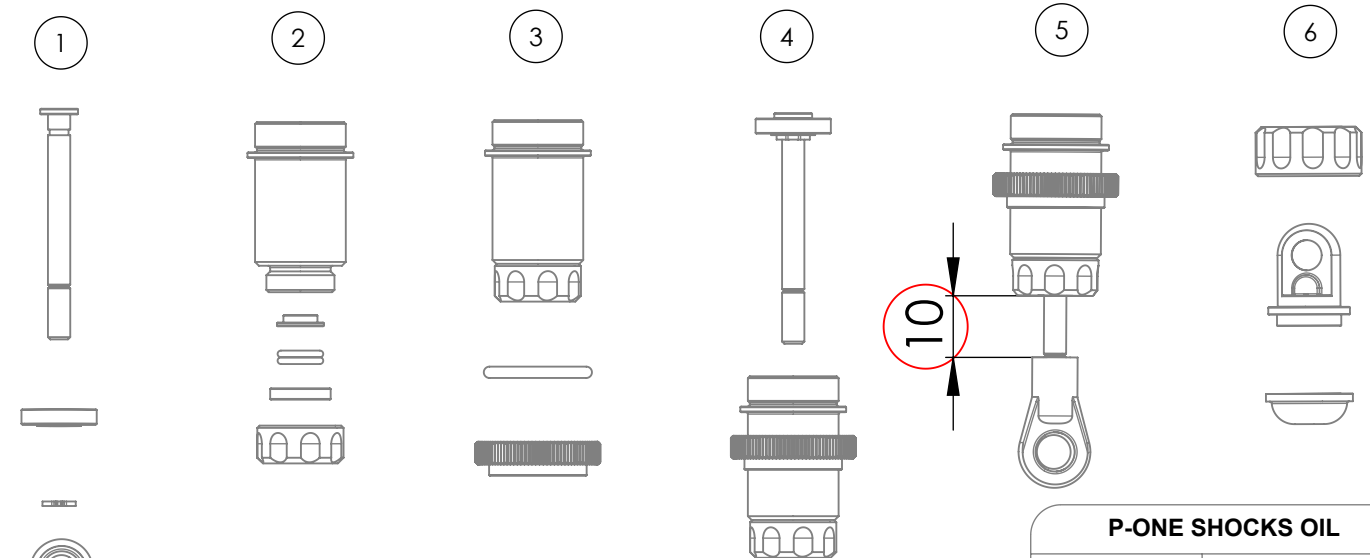
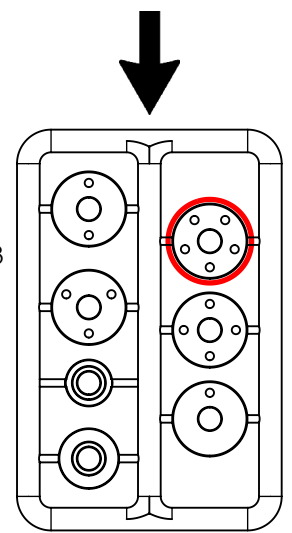
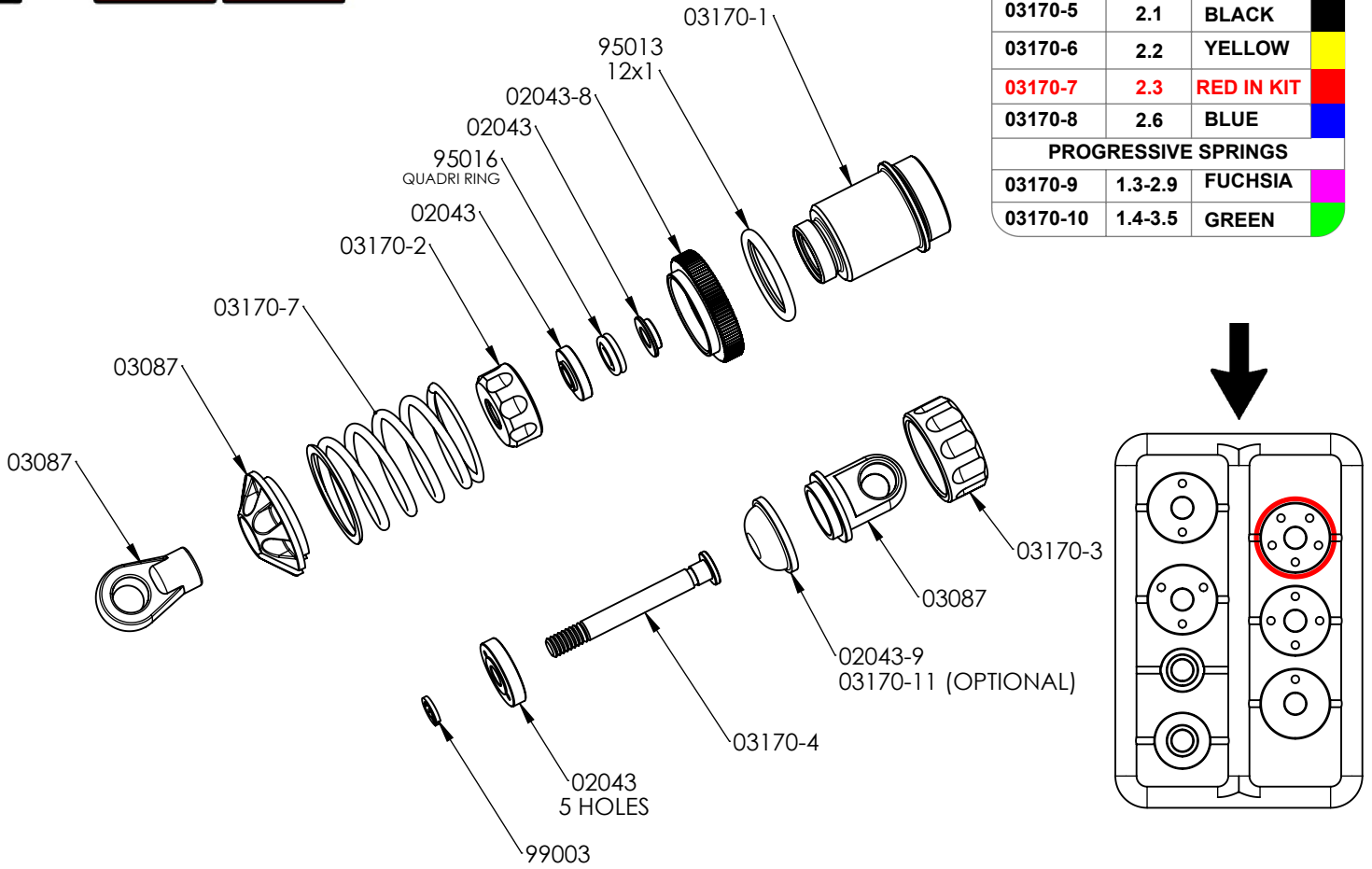
RIGHT - LEFT

03409-1

03409-1



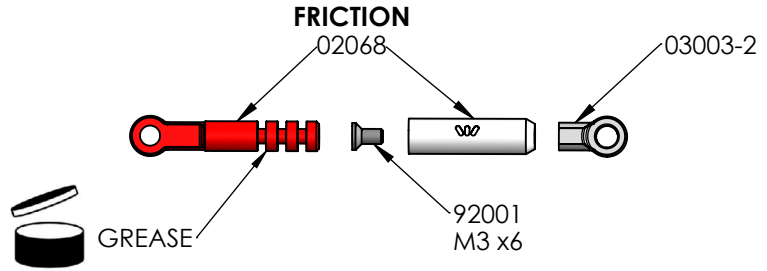
SPRINGS		
COD	Force (lb)	COLOUR
03170-5	2.1	BLACK
03170-6	2.2	YELLOW
03170-7	2.3	RED IN KIT
03170-8	2.6	BLUE
PROGRESSIVE SPRINGS		
03170-9	1.3-2.9	FUCHSIA
03170-10	1.4-3.5	GREEN



SHOCK FILLING

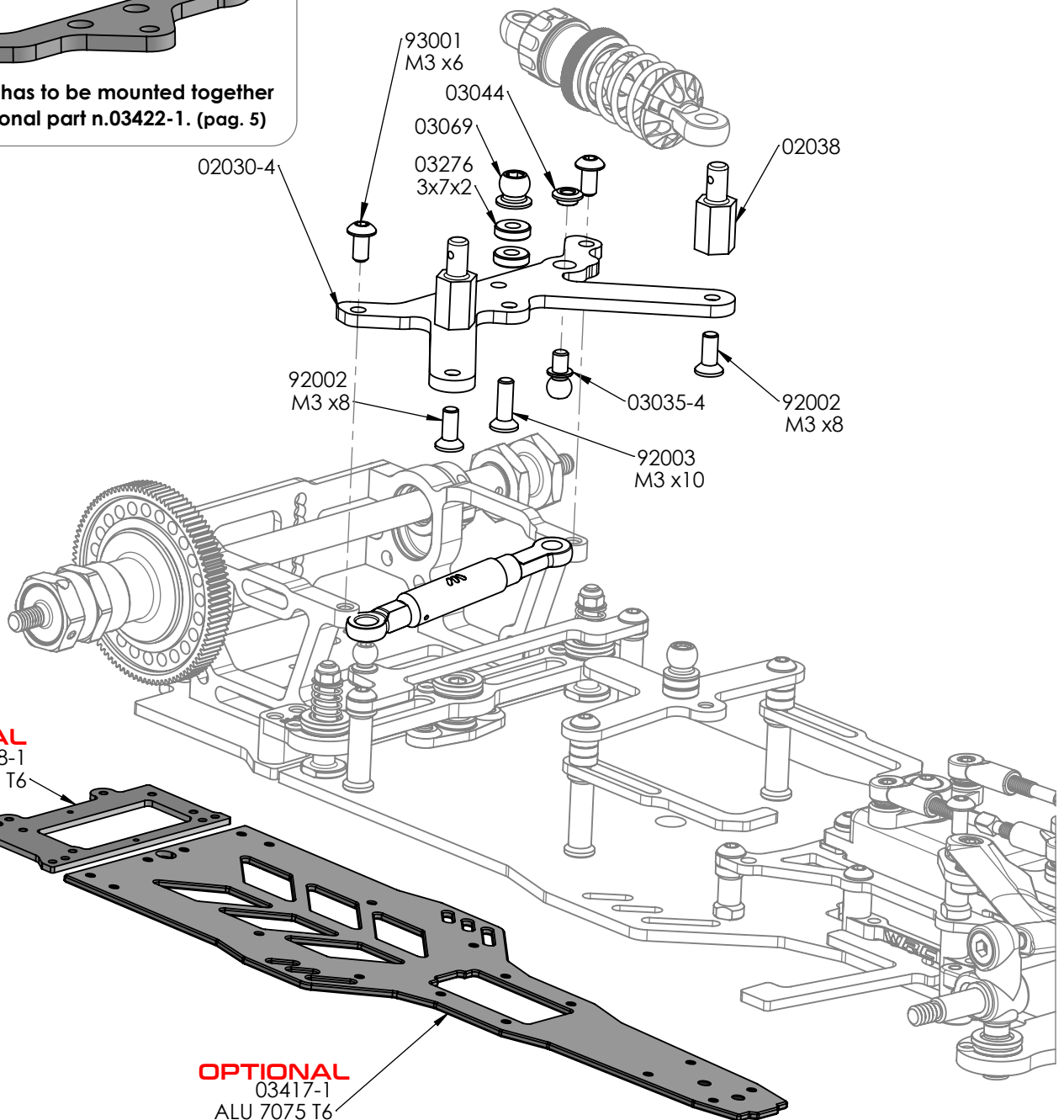
Fully extend the piston rod so the piston is at the bottom of the shock body.
 Hold the shock upright and fill the shock body with shock oil as in the picture.
 Let the oil settle and allow air bubbles to rise to the top.
 Slowly move the piston up and down until no more air bubbles appear.
 Add shock oil as necessary.
 Pull the piston rod most of the way out of the shock bod.
 Let the shock rest for 5 minutes to allow the air bubbles to scape.

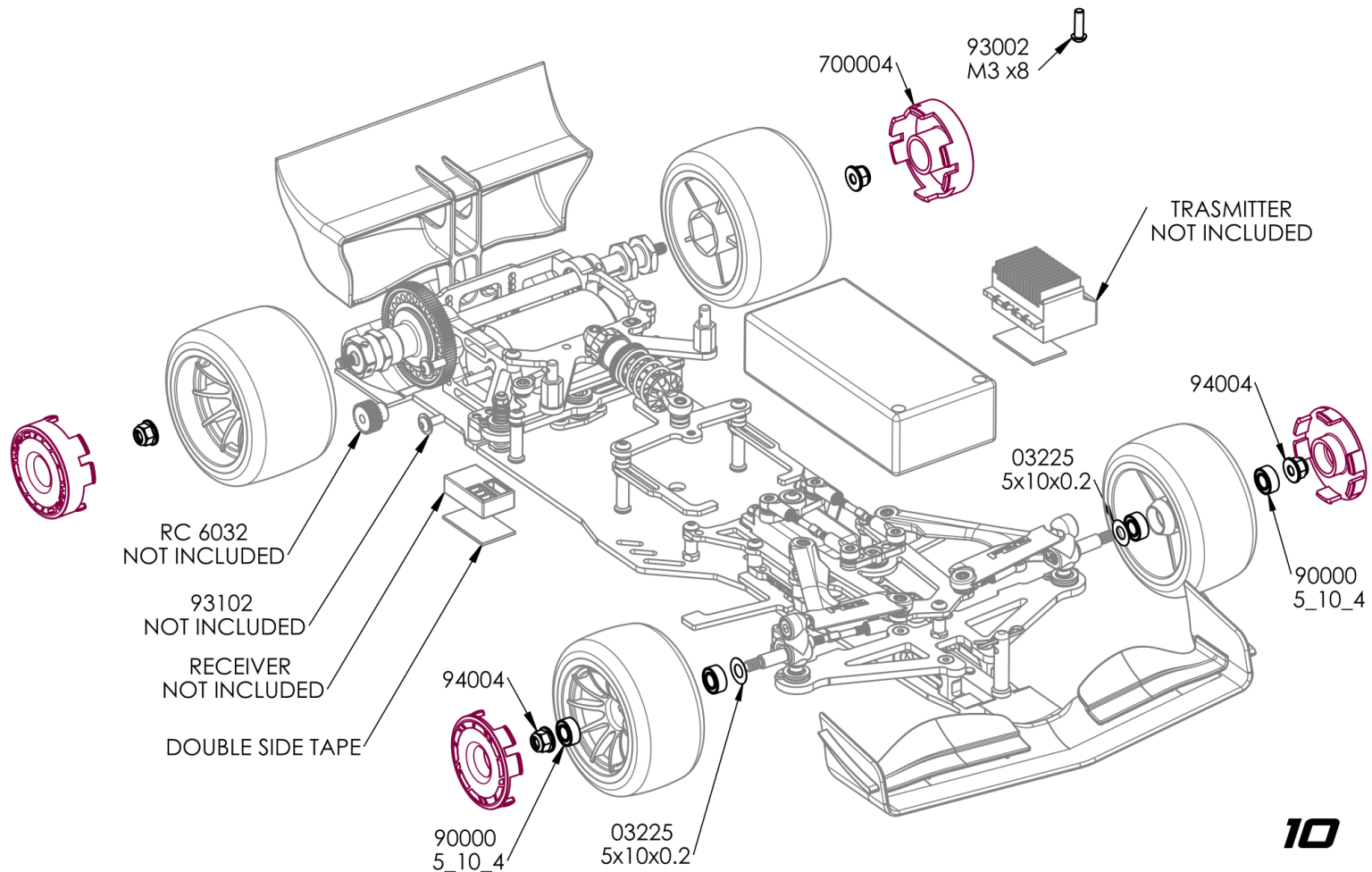
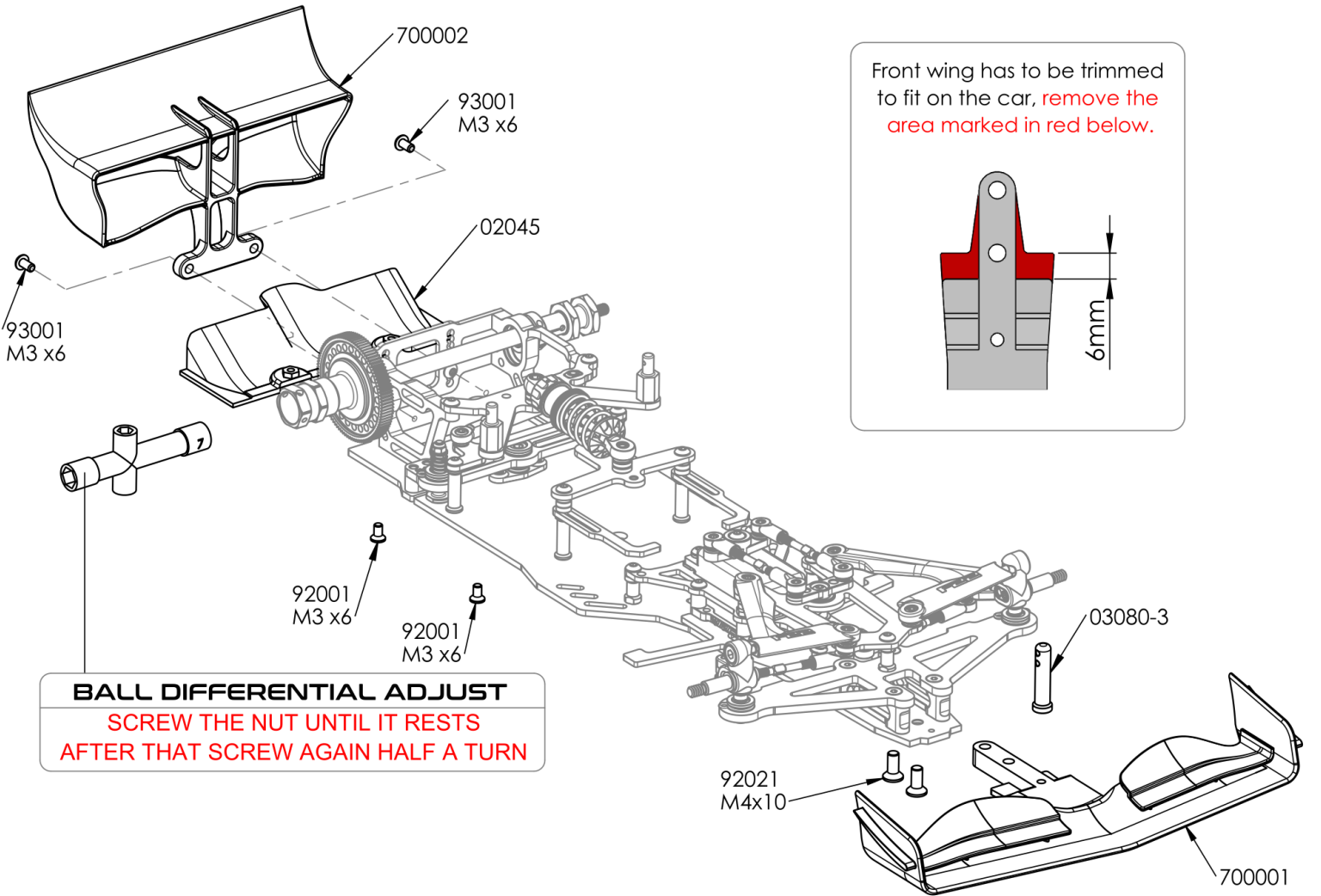
P-ONE SHOCKS OIL	
CODE	CST
SO-350	350
SO-400	400
SO-450	450
SO-500	500
SO-550	550
SO-600	600
SO-650	650
SO-700	700(IN KIT)
SO-800	800

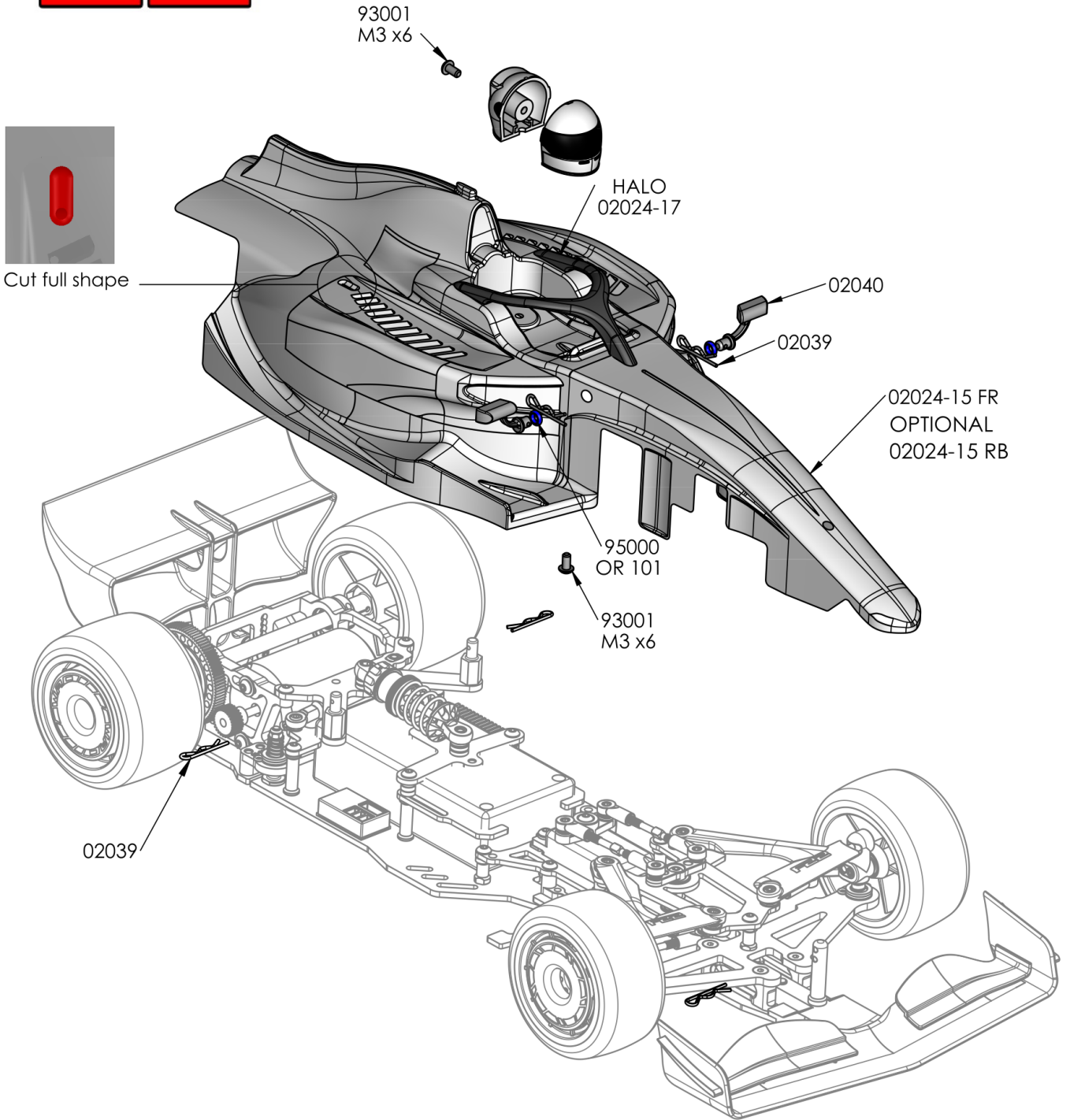


OPTIONAL
02030-2

This part has to be mounted together with optional part n.03422-1. (pag. 5)







NAME _____
 DATE _____
 TRACK _____

TRACK CONDITION

SURFACE	<input type="radio"/> CARPET	<input type="radio"/> ASPHALT
TRACTION		
<input type="radio"/> LOW	<input checked="" type="radio"/> MEDIUM	<input type="radio"/> HIGH

DRIVE RATIO

PINION	SPUR
	90

BALL DIFF.

LOSE	<input type="checkbox"/>	<input type="checkbox"/>	<input checked="" type="checkbox"/>	<input type="checkbox"/>	<input type="checkbox"/>	TIGHT
------	--------------------------	--------------------------	-------------------------------------	--------------------------	--------------------------	-------

TYRES MODE TYPE

FRONT	P-ONE	P01
REAR	P-ONE	P01

SPRINGS

FRONT		GREY	<input checked="" type="radio"/> G
REAR		GOLD	<input checked="" type="radio"/> GLD
DAMPER		RED	<input checked="" type="radio"/> R

OIL VISCOSITY PISTON HOLES

DAMPER	700	5 HOLES
SIDE SHOCK	100000	

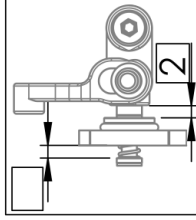
REAR WING

<input checked="" type="checkbox"/>	① LOW
<input type="checkbox"/>	② MEDIUM
<input type="checkbox"/>	③ HIGH

REAR HEIGHT

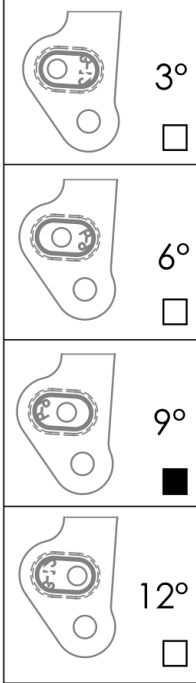
-3 MM.	-2 MM.	-1 MM.	0 MM.	+1 MM.	+2 MM.	+3 MM.
<input type="checkbox"/>	<input type="checkbox"/>	<input type="checkbox"/>	<input type="checkbox"/>	<input checked="" type="checkbox"/>	<input type="checkbox"/>	<input type="checkbox"/>

HEIGHT ADJUST.

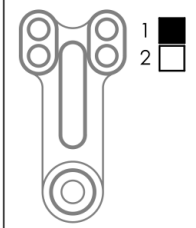


VIEW FROM TOP

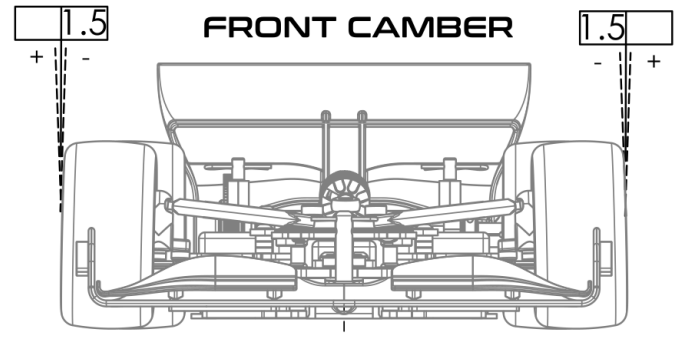
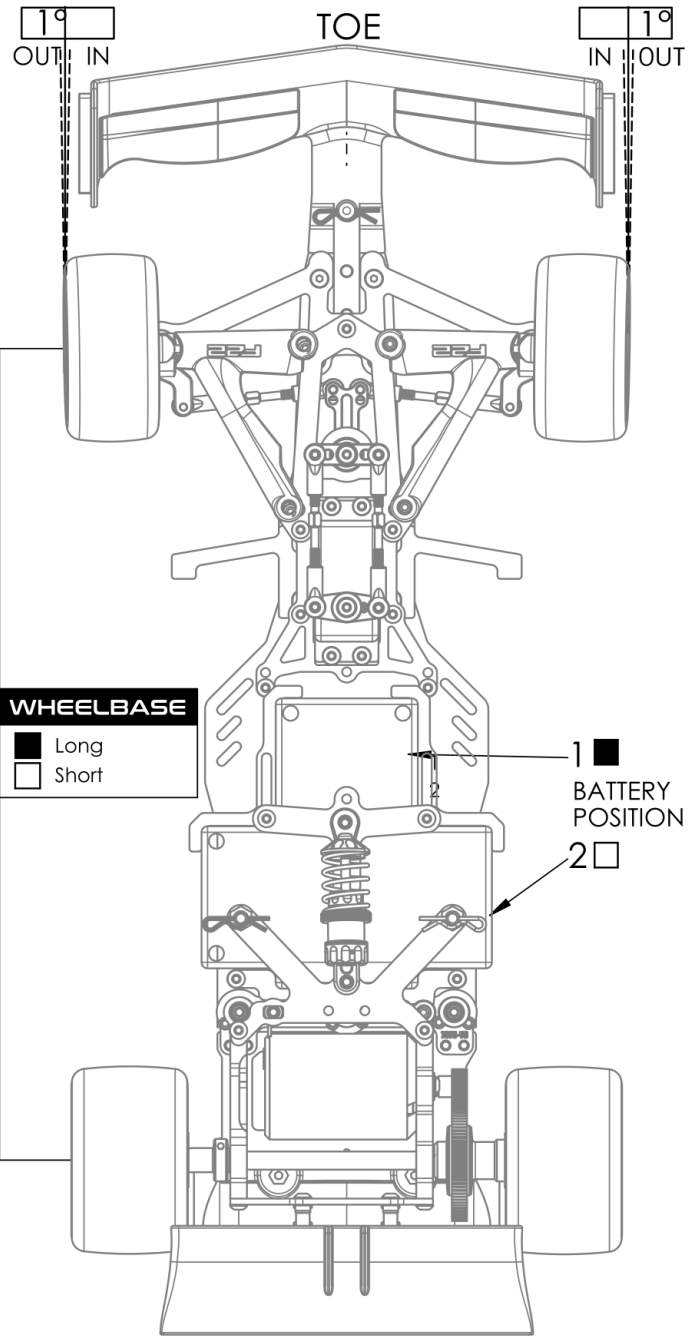
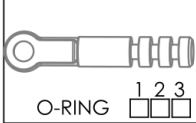
CASTER



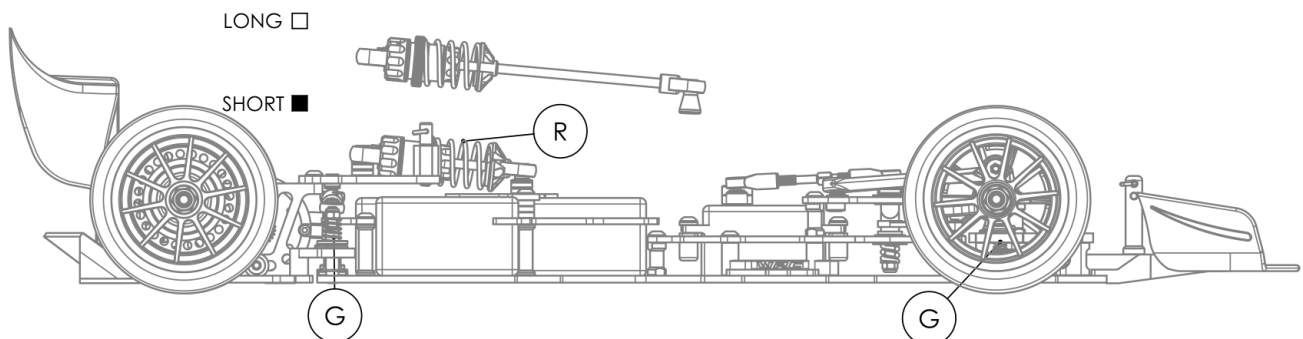
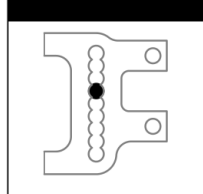
ACKERMANN



ABSORBER



REAR WING POSITION



WIRC
PROFESSIONAL RC CAR

WWW.WIRCRACING.COM